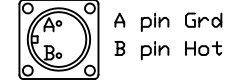
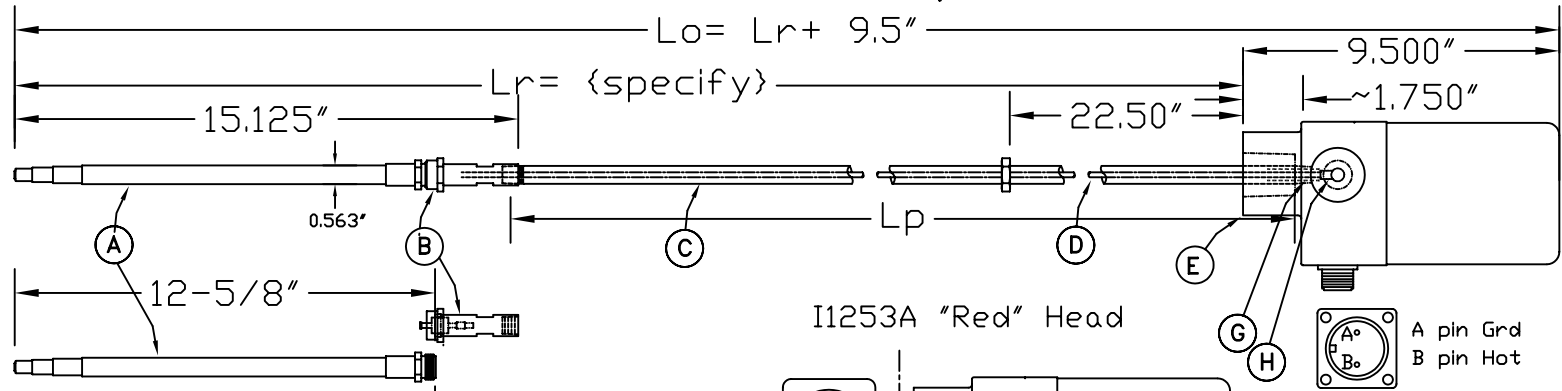
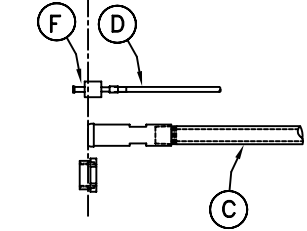
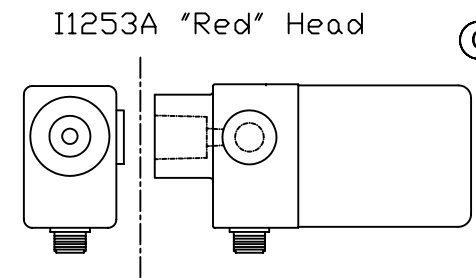
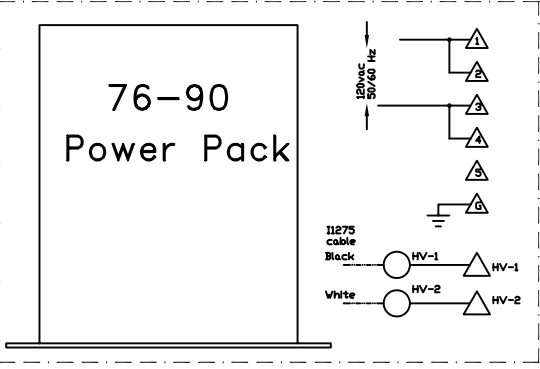


# I1248 Arc Probe Lance Assembly

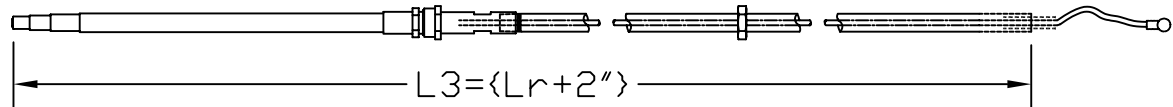


Compatible Cable:  
I-1275

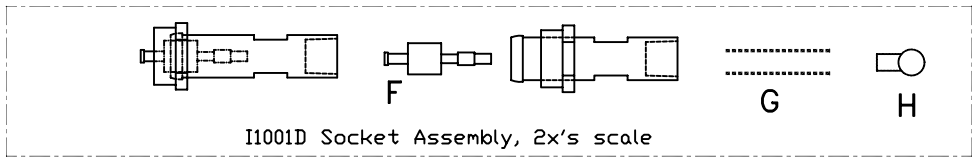
Typical Compatible Powersupply



special subassembly of I1248 (parts: A,B,C,D,G, & H)



A pin- White [Grd]  
B pin- Black [Hot]



BILL OF MATERIALS / REPLACEMENT PARTS	
I1248 Arc Probe Assembly; LR=X	
A	I1140 Arc Probe
B	I1001D Socket Assembly Kit
C	A21067 1/4" sch 40 CS pipe with guild L= A/L Lp= Lr - 12-7/8"
D	W12105 High Voltage/ High Temperature Wire L=A/R (upgrade from old wire No.: W12032)
E	I1253A Power Head (RED)
[F]	I1265-2 Porceline & Contactor; part of I1001D Kit
[G]	W12080K Protective sleaving, part of I1001D Kit
[H]	W12030-10 Ring Terminal, part of I1001D Kit

FREDERICK COWAN & Co., Inc.  
Riverhead, L.I., New York

OUTLINE I1248 Probe Assembly

FOR: 200 Series Ignitor

7	changed wire to W12105 1/07/03 -tlc	8	added Lp= f(Lr) 2/03/03-tlc	9	added Lp on dwg 2/06/03-tlc	10	added front view of I1253A; 10/15/04-tlc	11	added curent I1140 probe design 7/24/06-tlc	12	add. spec. Probe assemb. 11/27/06
1	taken from B1941-6 5/14/99 -tlc	2	released 5/16/99 -tlc	3	revised 1/4/00 -tlc	4	added A21067 part number -tlc, 6/29/01	5	added 76-90 PowerPack -tlc, 7/22/02	6	corr. minor dwg error 1/01/03

SCALE: 1:4 DATE: 5/15/99 DR. tlc CK. DR.No. B2212-12